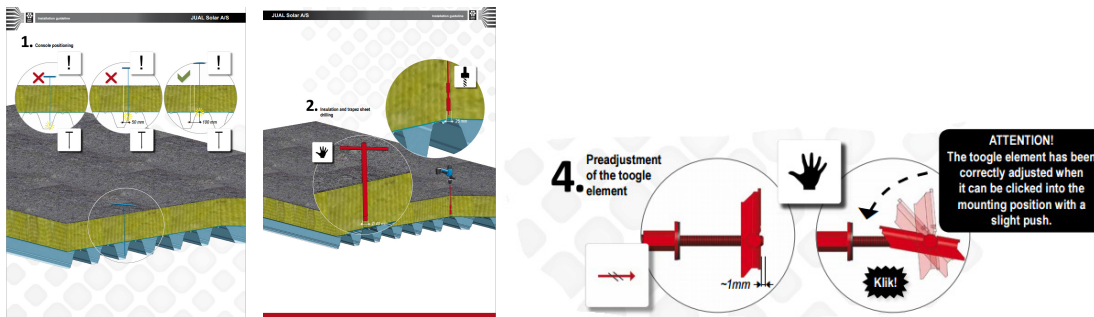


## Installation guideline for toggle anchor with horizontal reinforcement

This installation guideline describes the installation process for the toggle anchor when this is combined with the horizontal reinforcement accessory.

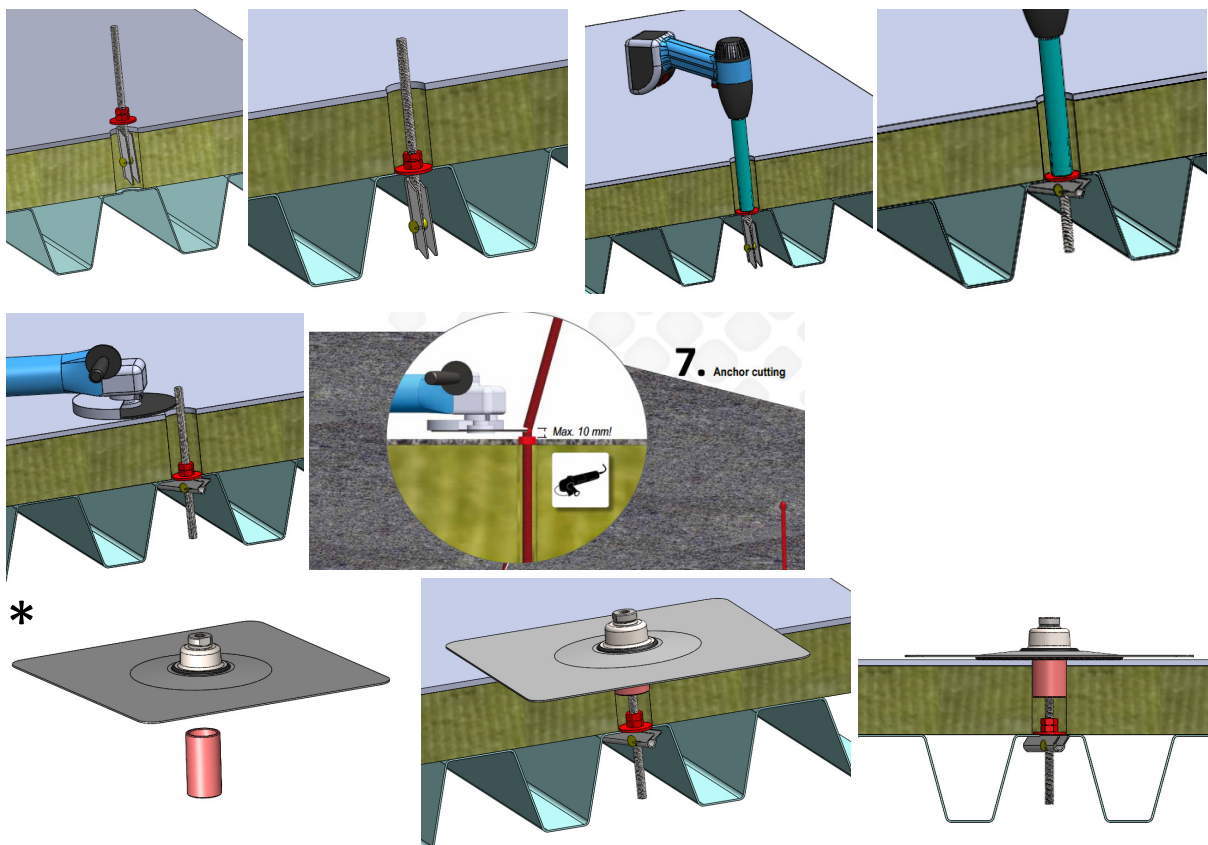
### Step 1.

As for the normal installation of toggle anchors in warm roof constructions the first steps in the standard installation guide line must be followed which is briefly described through out the following illustrations. Please notice that due to the limited amount of insulation (  $t < 200$  mm ) for these types of installations the drill for the trapezoid sheet can be reduced to a  $\varnothing 22$  mm drill.



### Step 2.

The following step is to install the toggle anchor with the horizontal reinforcement where this installation requires that a 17 mm tube socket is at hand in order to be able to constrain the anchor at the level of the trapezoid steel sheet.



\* The horizontal reinforcement must be turned into the Roof Console by engaging it into the M35 thread of the rigid Roof Console version. It is important that the two parts are constrained together when tightend.