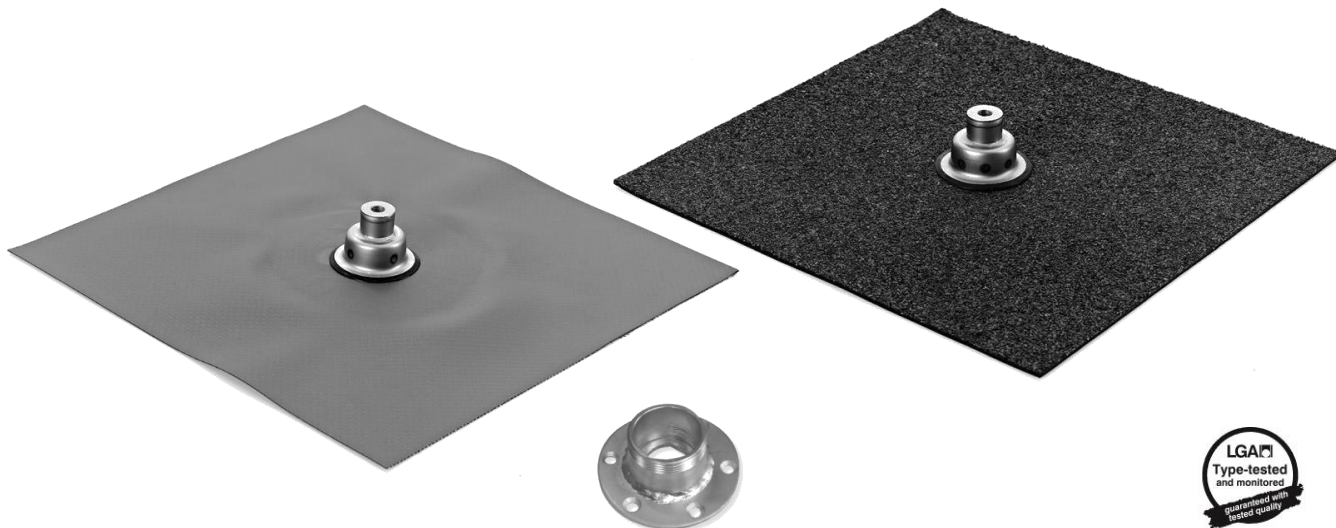




# TECHNICAL DATA SHEET

JUAL

## ROOF CONSOLE – SINGLE LAYER



### PRODUCT DESCRIPTION

*JUAL Roof console in stainless steel with bitumen/foil membrane*

**APPLICATION:**

For fastening structural elements or technical installations such as solar panels, antennas and the like on both cold and warm roof surfaces. The Roof consoles from JUAL A/S applies to flat roofs.

JUAL recommends that system suppliers, profile suppliers, solar panel suppliers or other advisors perform wind and load calculations.

**MATERIALS:**

Flange: Stainless steel AISI 304/EN AW-1.4301

Console top: Stainless steel AISI 304/EN AW-1.4301

Console adapter: Galvanized steel

Membrane: Bitumen (under lay *or* top layer) or foil is integrated from the factory. For non-standard types contact JUAL.

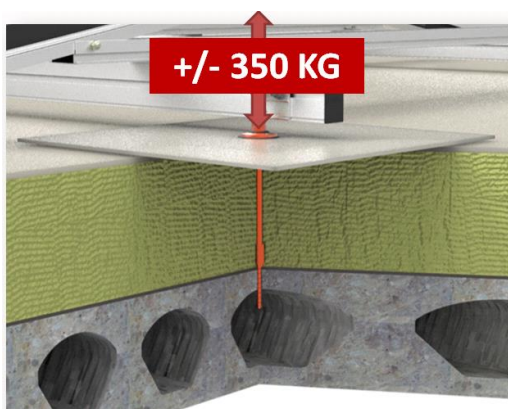
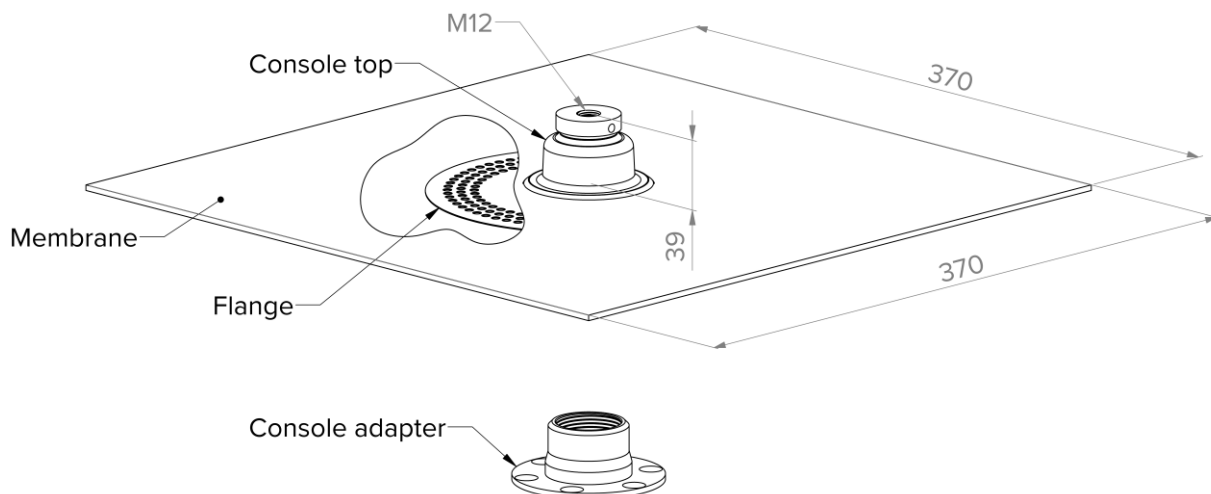
### ARTICLE NUMBERS

ARTICLE NUMBER	MEMBRANE
220060-xxx	<p>"xxx" is the membrane code</p> <p>Manufactured as standard with these membrane codes:</p> <p>103, 107, 109, 110, 111, 114, 199</p> <p>201, 202, 203, 204, 206, 207, 299</p> <p>Membrane list is found at <a href="http://www.jual.dk">www.jual.dk</a></p>



# TECHNICAL DATA SHEET

## TECHNICAL INFORMATION



### LOAD CAPACITY:

Roof consoles attached to regular steel or concrete roof constructions are capable of withstanding loads of 350 kg tension and compression respectively.

Roof consoles must NOT be subjected to bending torque or lateral loads.

For application on wooden structures, individual assessments must be made for each project.

### PROJECT PLANNING:

Each Roof console is attached to the actual roof construction by means of a JUAL Console anchor. The Console anchor is used to secure the Console adapter on which the Roof console itself is fixed. Finally, the preinstalled membrane is welded to the roof membrane in a watertight connection.

Console anchors are available in different designs to fit different roof structures. Thus, the type of Console anchors and the type of preinstalled roof membrane must be defined during project planning.

Installation must be carried out by specialists and in accordance with current installation instructions. Installation instructions are available at [jual.dk](http://jual.dk).

### ACCESSORIES:

Various accessories can be ordered on separate item numbers. For more information contact JUAL or see more at [jual.dk](http://jual.dk).



Examples of installations with various console anchor types:

